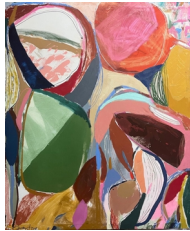




SIMARD  
BILODEAU  
CONTEMPORARY



**Heather Chontos** b. 1978  
*Sous Terre*, 2022  
Oil, Acrylic, Oil Stick and Ink on Linen  
80 x 99 1/2 in  
203.2 x 252.7 cm  
(HCS022)



**Heather Chontos** b. 1978  
*Undoing*, 2022  
Oil stick, oil, acrylic and ink on canvas  
61 1/2 x 50 1/2 in  
156.2 x 128.3 cm  
(HCS021)



**Heather Chontos** b. 1978  
*Now Until Then*, 2022  
Signed on the front bottom left  
Oil stick, oil, acrylic and ink on canvas  
51 x 101 1/2 in  
129.5 x 257.8 cm  
(HCS023)



**Heather Chontos** b. 1978  
*In Between*, 2021  
Oil, Oil Stick, Acrylic, Ink and Gouache on Canvas  
  
80 x 65 in  
203.2 x 165.1 cm  
(HCS008)



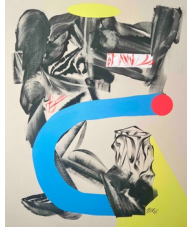
**Tyler Keeton Robbins** b. 1977  
*The Sun Beneath the Water*, 2022  
Acrylic on Canvas  
60 x 48 in  
152.4 x 121.9 cm  
(TKR024)



**Tyler Keeton Robbins** b. 1977  
*Thousand Year Vines*, 2022  
Acrylic on Canvas  
48 x 48 in  
121.9 x 121.9 cm  
(TKR025)



SIMARD  
BILODEAU  
CONTEMPORARY



**Tyler Keeton Robbins** b. 1977  
*Clown Knows, 2023*  
Acrylic on Canvas  
50 x 40 in  
127 x 101.6 cm  
(TKR020)



**Tyler Keeton Robbins** b. 1977  
*Mercy Mountain, 2023*  
Acrylic on Canvas  
50 x 40 in  
127 x 101.6 cm  
(TKR021)



**Tyler Keeton Robbins** b. 1977  
*Strawberry Milk, 2023*  
Acrylic on Canvas  
48 x 36 in  
121.9 x 91.4 cm  
(TKR023)



**Tyler Keeton Robbins** b. 1977  
*Clipped Wings*  
Acrylic on Canvas  
50 x 40 in  
127 x 101.6 cm  
(TKR019)



**Tyler Keeton Robbins** b. 1977  
*Facing West Facing East, 2023*  
Acrylic on Canvas  
50 x 40 in  
127 x 101.6 cm  
(TKR022)



**Emma Larsson** b. 1977  
*Balance of Harmony I - Framed, 2022*  
Initials on the bottom right corner  
Watercolor and Mixed Media on Paper 640gsm  
30 x 22 in  
76.2 x 55.9 cm  
(ELN145)



SIMARD  
BILODEAU  
CONTEMPORARY



**Emma Larsson** b. 1977  
*Balance of Harmony III - Framed, 2022*  
Initials on the bottom right corner  
Watercolor and Mixed Media on Paper 640gsm  
30 x 22 in  
76.2 x 55.9 cm  
(ELN146)



**Emma Larsson** b. 1977  
*An Outcast (a clown) II - Framed, 2022*  
Watercolor and Mixed Media on Paper 640gsm  
30 x 22 in  
76.2 x 55.9 cm  
(ELN131)



**Emma Larsson** b. 1977  
*Balance of Harmony II - Framed, 2022*  
Initials at the bottom right corner  
Watercolor and Mixed Media on Paper 640gsm  
30 x 22 in  
76.2 x 55.9 cm  
(ELN147)



**Emma Larsson** b. 1977  
*An Outcast (a clown) I - Framed, 2022*  
Initials on the bottom right corner  
Watercolor and Mixed Media on Paper 640gsm  
30 x 22 in  
76.2 x 55.9 cm  
(ELN130)



**Emma Larsson** b. 1977  
*Hiding My Fire - Framed, 2022*  
Initials at the bottom right corner.  
Watercolor and Mixed Media on Paper 640gsm  
30 x 22 in  
76.2 x 55.9 cm  
(ELN138)



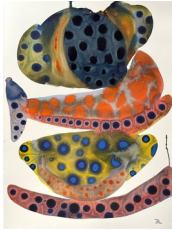
**Emma Larsson** b. 1977  
*Spirited Away I - Framed, 2022*  
Initials on the bottom right corner  
Watercolor and Mixed Media on Paper 640gsm  
30 x 22 in  
76.2 x 55.9 cm  
(ELN139)



SIMARD  
BILODEAU  
CONTEMPORARY



**Emma Larsson** b. 1977  
*Submitting to The Subconscious I - Framed, 2022*  
Initials at the bottom right corner  
Watercolor and Mixed Media on Paper 640gsm  
30 x 22 in  
76.2 x 55.9 cm  
(ELN143)



**Emma Larsson** b. 1977  
*Self Expression I - Framed, 2022*  
Initials on the bottom right corner  
Watercolor and Mixed Media on Paper 640gsm  
30 x 22 in  
76.2 x 55.9 cm  
(ELN132)



**Emma Larsson** b. 1977  
*Self Expression II - Framed, 2022*  
Initials on the bottom right corner  
Watercolor and Mixed Media on Paper 640gsm  
30 x 22 in  
76.2 x 55.9 cm  
(ELN133)



**Emma Larsson** b. 1977  
*Submitting to The Subconscious II - Framed, 2022*  
Initials at the bottom right corner  
Watercolor and Mixed Media on Paper 640gsm  
30 x 22 in  
76.2 x 55.9 cm  
(ELN144)



**Emma Larsson** b. 1977  
*The Ancient Hum - Framed, 2022*  
Initials at the bottom right corner  
Watercolor and Mixed Media on Paper 640gsm  
30 x 22 in  
76.2 x 55.9 cm  
(ELN134)



**Emma Larsson** b. 1977  
*Everything is Connected - Framed, 2022*  
Initials on the bottom right corner  
Watercolor and Mixed Media on Paper 300gsm  
42 x 32 in  
106.7 x 81.3 cm  
(ELN137)



SIMARD  
BILODEAU  
CONTEMPORARY



**Emma Larsson** b. 1977  
*The Protected Ones II - Framed*, 2022  
Initials on the bottom right corner.  
Watercolor and Mixed Media on Paper 300gsm  
42 x 32 in  
106.7 x 81.3 cm  
(ELN142)



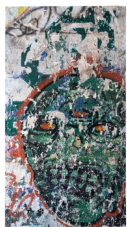
**Emma Larsson** b. 1977  
*The Protected Ones I - Framed*, 2022  
Initials on the bottom right corner  
Watercolor and Mixed Media on Paper 300gsm  
42 x 32 in  
106.7 x 81.3 cm  
(ELN141)



**Emma Larsson** b. 1977  
*World Inside Me II - Framed*, 2022  
Initials at the bottom right corner  
Watercolor and Mixed Media on Paper 400gsm  
60 x 48 in  
152.4 x 121.9 cm  
(ELN136)



**Emma Larsson** b. 1977  
*World Inside Me I - Framed*, 2022  
Watercolor and Mixed Media on Paper 400gsm  
60 x 48 in  
152.4 x 121.9 cm  
(ELN135)



**Alfredo Romero** b. 1974  
*Los Sueños de la Razón Producen Monstruos*, 2020  
Strappo and Mixed Media on Canvas  
83 x 38 in  
210.8 x 96.5 cm  
(ARO027)



**Alfredo Romero**  
*Strattos Códigos Cifrados*, 2023  
Strappo and Mixed Media on Canvas  
45 x 55 in  
114.3 x 139.7 cm  
(ARO032)

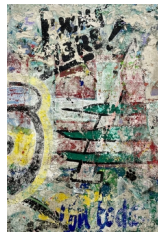




SIMARD  
BILODEAU  
CONTEMPORARY



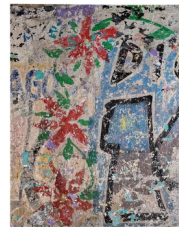
**Alfredo Romero** b. 1974  
*Urban Siquieros*, 2018  
Strappo and mixed media on canvas  
43 x 94 x 1 in  
109.2 x 238.8 x 2.5 cm  
(ARO033)



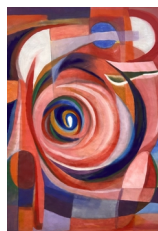
**Alfredo Romero** b. 1974  
*Lucha Libre*, 2021  
Strappo and Mixed Media on Cotton Canvas  
  
71 x 45 in  
180.3 x 114.3 cm  
(ARO001)



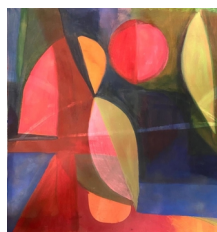
**Alfredo Romero** b. 1974  
*Vestigio Altamira*, 2021  
Strappo and Mixed Media on Cotton Canvas  
72 1/2 x 43 in 184.2 x 109.2 cm  
(ARO003)



**Alfredo Romero**  
*Inside*, 2021  
Strappo, Silver leaf and Mixed Media on Canvas  
59 x 43 in  
149.9 x 109.2 cm  
(ARO031)



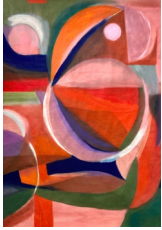
**Caroline Denervaud** b. 1978  
*Drawn to the Center*, 2022  
Signed and year on the verso.  
Casein, Pigments, Charcoal and Pastel on Linen, 2022  
80 x 56 in  
203.2 x 142.2 cm  
(CDD005)



**Caroline Denervaud** b. 1978  
*All Seems Balanced*, 2022  
Casein, Pigments, Charcoal, Pastel on Paper  
37 1/2 x 34 1/4 in  
95 x 87 cm  
(CDD018)



SIMARD  
BILODEAU  
CONTEMPORARY



**Caroline Denervaud** b. 1978

*The Lunar Escape*, 2022

Signed on the back.

Casein, Pigments, Charcoal, Pastel on Linen

74 x 52 in

188 x 132.1 cm

(CDD002)